

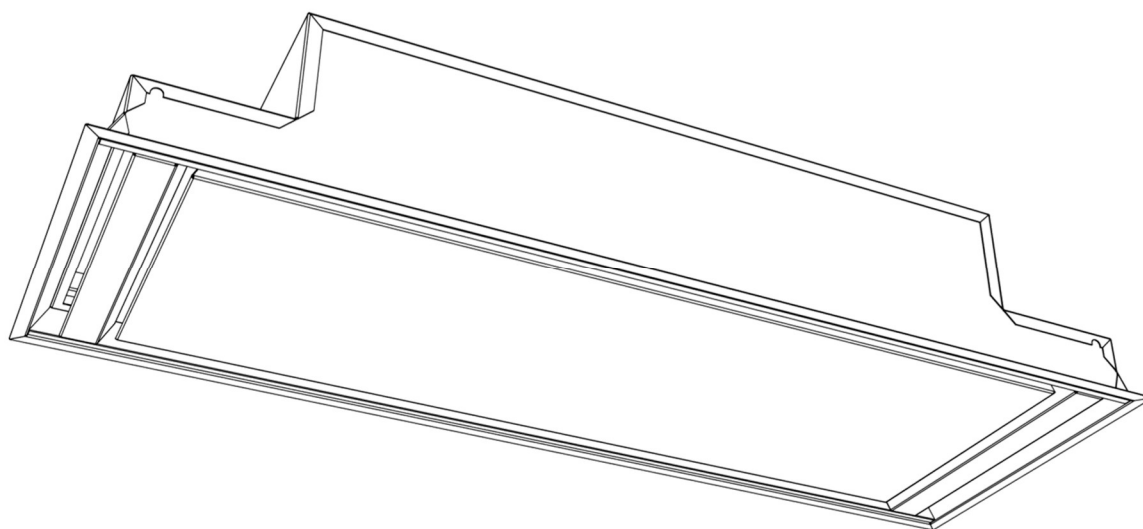
STRATUS 360 Built-In Unit

Installation, Operation and
Maintenance

INTRODUCTION	1
IMPORTANT INFORMATION	2
SYSTEM PERFORMANCE	3
INSTALLATION	4
DRAWINGS & ILLUSTRATIONS	5
OPERATING INSTRUCTIONS	6
MAINTENANCE	7
SPECIFICATIONS	8

Unpacking

Remove all items from the packaging. Retain the packaging.
If items are missing or damaged, please contact Westin for assistance.



W S Westin Ltd
Phoenix Mills, Leeds Road, Huddersfield, HD1 6NG, UK
Tel: 01484 421585 Fax: 01484 432420 Email:
sales@westin.co.uk
www.westin.co.uk

Stratus 360 Air Recirculating Ceiling Unit

Installation, Operating & Maintenance Instructions



1. INTRODUCTION

During the cooking process odours are produced which, if left untreated, can linger for a long time after cooking has ceased. Your *Westin Stratus 360* Ceiling built-in unit is a powerful built-in extractor that has been designed to complement your kitchen both in looks and performance in order to create a good environment for creative cooking and is ideal for applications where a conventional cooker hood is neither suitable nor desirable.

Featuring the *Westin 360* air recirculation technology, many of the benefits of ducted extraction products are delivered by this revolutionary **duct-free** air cleansing system, effectively removing unwanted odours from your kitchen.

Of course, hygiene is also a priority in any kitchen and your *Westin Stratus 360* not only serves to remove odours but also actively assists in the destruction of harmful bacteria, pathogens and allergens which may be present, thus helping to purify the air.

Your *Stratus 360* also benefits from Westin's unique LED Light Blade lighting system, delivering simultaneous ambient and task lighting to your kitchen.

2. IMPORTANT INFORMATION

Pay particular attention to fire risk when frying. To minimise the risk of fire, all instructions relating to cleaning the grease filters and removing grease deposits must be adhered to.

Do not flambé under the extractor.

ELECTRICAL SAFETY.

This appliance requires an earth connection.

Ensure that the supply voltage corresponds to that marked on the rating label inside the extractor.

The extractor must be isolated from the electrical supply before carrying out any cleaning or maintenance operations.

This product has been designed for installation directly into your kitchen ceiling or at an otherwise high level so that the underside of your *Stratus 360* is as close to the ceiling as possible.

Installation at lower levels may result in reduced system performance and excessive draughts at worktop level on high fan speeds caused by the close proximity of the air discharge vents at each end of the product.

Whilst we recommend installation is at ceiling level, if you do choose to install the product at a lower level (for example within furniture above your hob) then the minimum clearance between the top of the hob and the underside of the *Stratus 360* should be within the following range (unless a greater distance is specified by your cooking appliance or furniture manufacturer):

- hob-to-extractor **minimum** clearance distances:
450mm above electric hobs and cookers
750mm above gas hobs and cookers, fryers, open grills
850mm above Wok burners, griddles, barbecues.
- hob-to-extractor **recommended** clearance distance:
Flush with or within 300mm of ceiling.

The minimum distance between the hob and the bottom of the extractor is essential for safety reasons and to prevent overheating of the extractor and its components.

3. SYSTEM PERFORMANCE

In very simple terms, your *Stratus 360* relies on two primary principals to maximise effectiveness:

Firstly, air is drawn into the perimeter air intake slot surrounding the central door panel and passes through the extractor where contaminants are broken down by the 360 system.

The air is then discharged into the room via two discharge vents at each end of the appliance.

The potency of the contaminants will determine how long it takes to completely remove odours, with the discharged air mixing with other air in the room and then being drawn back through the extractor in a continuous cycle.

This mixing of the air is important and works best when the unit is installed at a high level, maximising the mixing effect. Not only that, but warm foul air will rise up and be collected more effectively at ceiling level. Furthermore, draughts from the discharge vents are reduced with distance.

The second strategy for tackling odours also relies on effective mixing of the air in the room. Your *Stratus 360* emits super-oxidants (reactive molecules), via the discharge vents, which are sent out into the room to react with odour molecules they encounter. In this way, the *Stratus 360* not only works to reduce airborne contaminants but also those adhering to surfaces, such as walls.

In summary, overall performance of the system is optimised when all of the air in the room is free to mix and enter the appliance unobstructed and the best way to ensure this is to install the unit at a high level as this will prevent pockets of air potentially stagnating.

In order to maintain optimal performance, it is important to follow the cleaning and maintenance instructions in section 7. In brief, this entails keeping the grease filters and accessible parts and surfaces clean and ensuring that the *Westin 360* air cleaning module's special UVC composite lamp is periodically replaced.

4. INSTALLATION

The extractor is designed for installation within a cut-out in the underside of the kitchen ceiling. Alternatively, it may be installed within a lowered section of ceiling (boxed in area) or into a soffit panel within furniture – remember though that it is desirable to install directly into the ceiling (see section 5.2).

Dimensioned drawings and illustrations to help with your installation can be found in Section 5.

Please note the following.

- The product features a safety cut-out switch and will not operate with the door in the open position. If you want to test the appliance prior to installation you should do so with the door closed.
- The *Stratus 360* has four fixing holes which are hidden behind the closed filter concealment panel (door) and are accessible only when the door is open.
- The fixing holes are located in the upper surface of the side wings (see line drawing in section 5) and are accessed (for fixing through) via 20mm access holes in the baseplate. By separating the load bearing and decorative surfaces in this way means we avoid any visible distortion to visible areas being caused by your fixings.
- Black cover caps are provided which press into and close off the fixing hole access points after installation.
- The door is held shut with magnetic catches.

Open the door by grasping it close to the corners on the catch side (the long edge opposite the hinges) and pulling

Stratus 360 Air Recirculating Ceiling Unit

Installation, Operating & Maintenance Instructions



to release the panel from the magnets. Take care not to let the door fall open freely, it should be supported and moved carefully into the open position.

4.1. Prepare Your Opening

Note: Preparation of your ceiling opening should be undertaken by a suitably competent person, such as a qualified builder.

Prepare an opening in the ceiling into which the unit will be installed (see table below).

Unit Size (mm) (Width x Depth x Height)	Cut-out Size (mm) (Width x Depth x Height)
1180 x 420 x 203	1155 x 395 x 205(min)

Reinforce the opening as necessary and make suitable provisions for the screws that will hold the unit in place. **The line drawings in section 5 show detailed product dimensions and fixing hole positions that will enable the accurate preparation of the ceiling opening.**

Typically, this will involve framing out the opening and installing short, sturdy timber beams (noggins) recessed into and running across the depth of the opening from which to hang the appliance using suitable screws.

The provisions made for hanging the appliance from within your opening, such as recessed beams or noggins, should be strong enough to support a total weight of 30Kg and be recessed so that their lower surface is 85mm above the finished ceiling level and positioned so that their centres coincide with the fixing holes of your Westin 360 (centre lines 894mm apart).

Because the Stratus 360 requires no ducting, any alterations to your joist arrangements should be relatively straightforward. Even if joists run across the line of the product, a competent builder should be able to trim out the opening, installing necessary trimmers and headers as for any other opening of this type.

Tip. If your combined joist height and ceiling thickness do not allow you to create a 205mm void height, we would recommend lowering the ceiling to achieve this (e.g. by double boarding, battening, etc.). If that is impractical then consider a small lowered area of ceiling or boxing that is sized to reflect the entire work surface below.

For installations into surfaces other than ceilings, such as furniture bases, the general advice above still applies. You will need to ensure that the opening is suitably sized and provides adequate recessed surfaces from which to hang the unit.

4.2. Electrical Installation

**ELECTRICAL HAZARD.
DISCONNECT ELECTRICAL SUPPLY
BEFORE PROCEEDING FURTHER**

The extractor is a fixed electrical appliance and must have a provision for isolating the electrical supply via a switched-fused spur located in an accessible position within the kitchen. A qualified electrical technician must perform the installation of the electrical supply to the extractor.

The hood must be fed from a dedicated 230Vac single phase electrical supply terminated with a switched spur fitted with a 3A fuse. The switch should be located so that the supply can be disconnected from the extractor using the switch at any time following installation – the switch must be accessible. The means of disconnection from the supply must have a minimum contact separation of 3mm in all poles.

Alternatively, a means of disconnection in the fixed wiring according to the relevant wiring rules must be fitted.

This appliance requires an earth connection.

A supply cord for connecting the extractor to the spur is included. The mains supply is connected to the free end of this cord as follows:

INCOMING SUPPLY CORD CONNECTIONS	
Core	Core Colour
Live	Brown
Neutral	Blue
Protective Earth	Green/Yellow

For your convenience during installation, we recommend terminating the electrical supply from the fused spur with a single gang switchless 240V plug socket set within the ceiling opening, positioned so as not to obstruct the unit when installed. A switchless socket prevents accidentally installing the unit with the socket switched off. The extractor's electrical supply cord can then be fitted with a corresponding 240V plug for easy connection to the electrical supply during installation.

Make sure the switched - fused spur supplying the extractor is in the 'off' position before connecting the appliance to the electrical supply.

4.3. Fixing the Stratus 360 in Position

Please note the following prior to commencing fixing the extractor in position:

- You will need at least 2 people to fit this extractor; to lift, hold and fix the unit in position.
- A working platform or scaffold should be used so that the ceiling opening can be reached and the unit fixed without the use of ladders.
- Screws for fixing the extractor into position are not provided. You must use suitable fixings capable of supporting 30kg with a head diameter of at least 10mm so that they cannot pass right through the fixing holes.

If you are screwing into timber, then you should use cross head screws with a thread diameter no smaller than 5mm (No 10) and a head diameter of 10mm or more and ensure that at least 35mm of thread will be buried/screwed into the timber and that the timber will not split when the screws are inserted.

**ELECTRICAL HAZARD.
DISCONNECT ELECTRICAL SUPPLY
BEFORE PROCEEDING FURTHER**

Rest the appliance on its back and carefully open the door panel, as previously described. Check that the fixing hole access points are open and that you can see the fixing holes. If the access holes have not been blanked off with the plastic cover caps provided then remove the caps and stow safely for use later.

You should now familiarise yourself with the location and layout of the fixing holes and check that the screws you plan to use are suitable. We recommend that you now practice inserting screws through the access points and fixing holes before the unit is lifted up into position so this is familiar to you when you come to fix the unit in position.

Next Support the extractor close enough to the prepared opening so that the mains electrical supply cable connections

Stratus 360 Air Recirculating Ceiling Unit Installation, Operating & Maintenance Instructions



on the Westin 360 plug (if fitted) are accessible and can be connected to the electrical supply.

Make sure that the electrical supply to your spur is isolated (switched off) and connect the electrical supply cord of your *Stratus 360* to the mains electrical supply spur. If you have previously installed a socket and fitted a plug to the appliance then this is a simple matter of plugging the unit in.

Two is the minimum number of people required to fix the extractor in position. We recommend that a third assistant is available to fix the unit in position whilst it is supported within the prepared opening.

Ensure that fixings (screws) and drivers will be within easy reach and that you will be able to insert and drive screws when the unit is offered up into position. If you have any concerns then you should obtain additional help to insert and tighten the fixing screws before proceeding.

Now lift the Stratus 360 up so that the door faces downwards and, supporting the unit by the short ends, carefully open the door panel to reveal the fixing holes.

Push the extractor up into the cut-out, taking care that no wires are trapped or damaged in the process and temporarily support it safely in position.

Secure the extractor permanently in place using suitable fixings (not supplied) through each of the four fixing holes in the baseplate and into the opening support structure.

Carefully remove temporary support for the unit whilst ensuring that the permanent fixings are safely supporting the weight of the unit.

Now test the function of the unit as described in the Operating Instructions section of this guide (Section 6).

Note, the unit will not operate with the door in the open position.

If the unit fails to operate then switch off the electrical supply to the hood and check all the electrical connections are sound and re-test before calling for assistance.

Press the black cover caps provided into the fixing hole access points to close these off before use.

Clean the unit as described in the maintenance section (section 7), taking care to **remove any polish, oil or cleaning solutions from the frosted edge of the light blade strip (kitchen roll is good for this) prior to handover. The edge of the lighting strip should be completely dry to achieve the best lighting effect – polish, oils or permanently wet solutions have a seriously detrimental effect on the appearance of the lighting.**

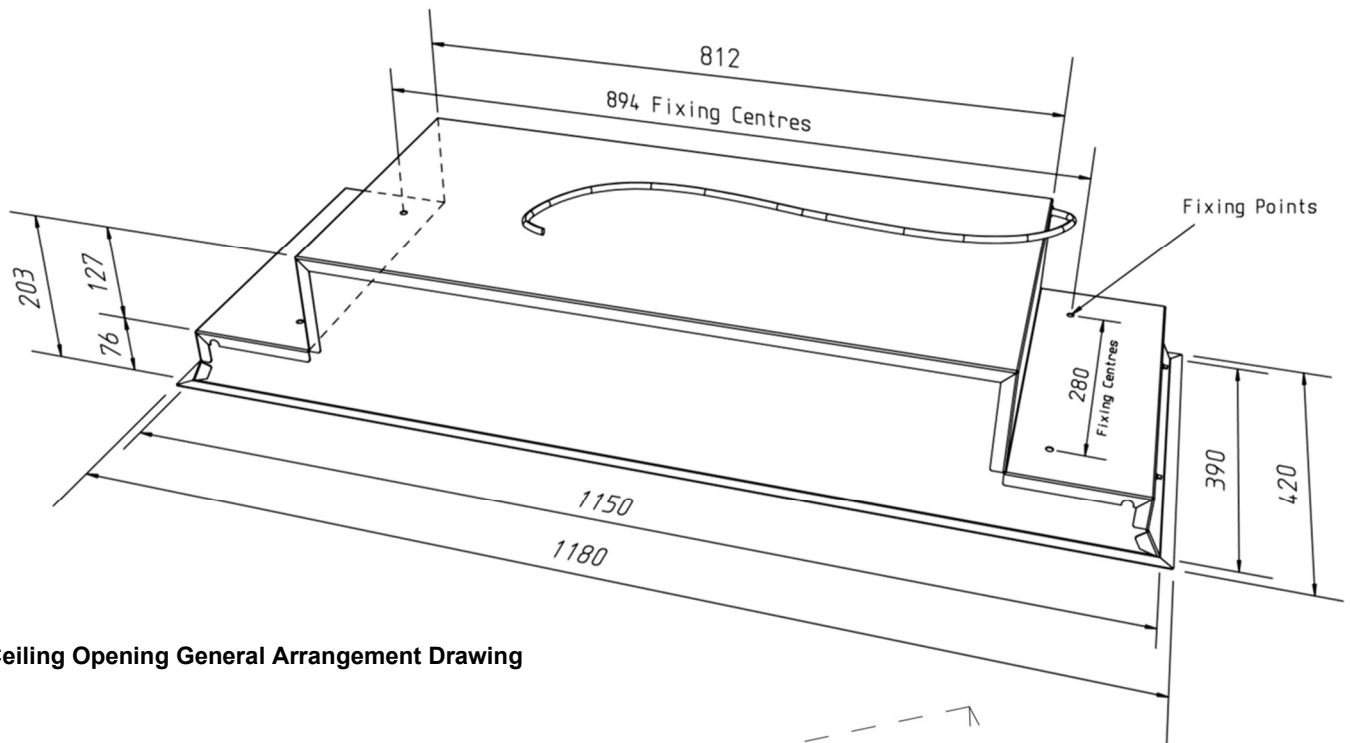
Please call Westin for immediate assistance if required.

Stratus 360 Air Recirculating Ceiling Unit Installation, Operating & Maintenance Instructions

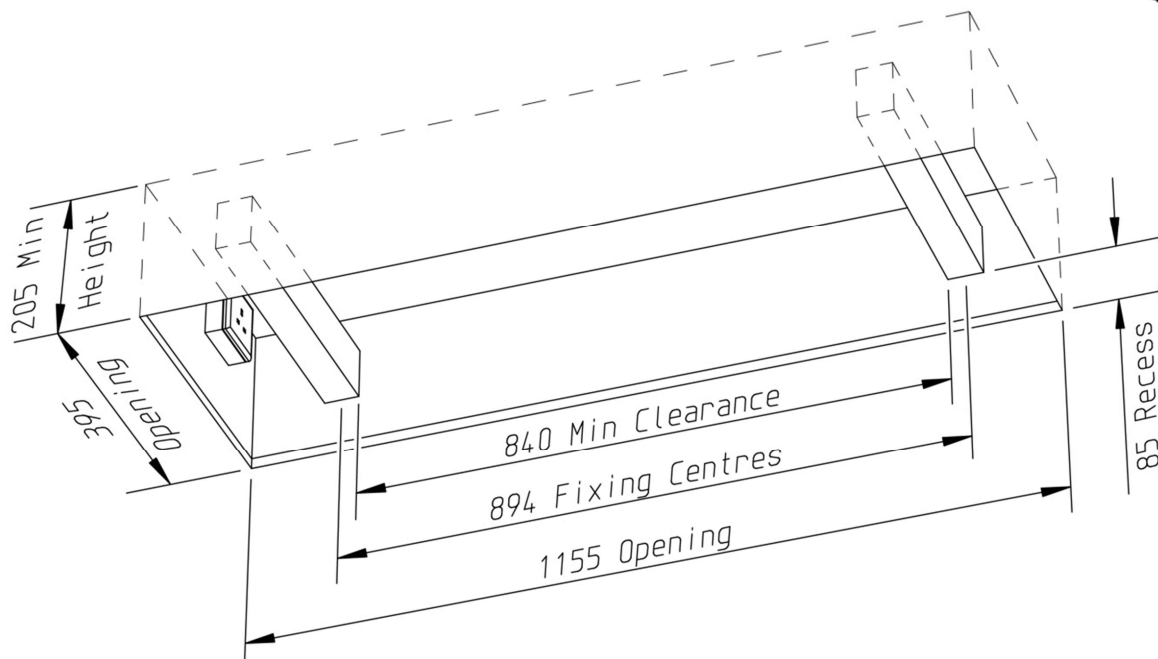


5. LINE DRAWINGS AND ILLUSTRATIONS

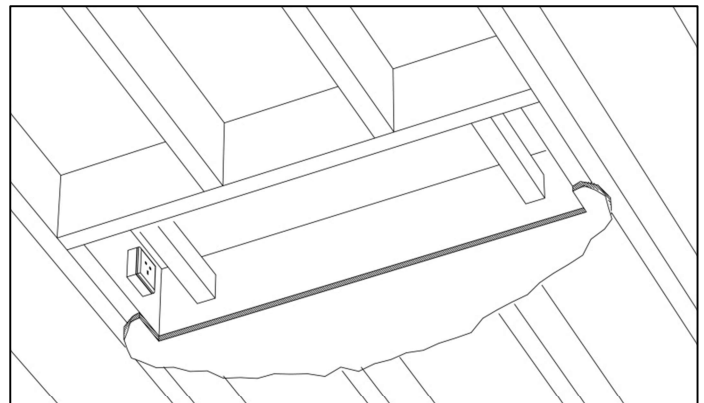
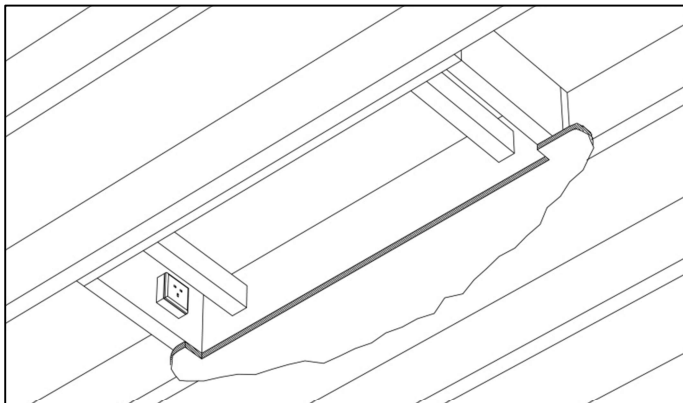
5.1. Stratus 360 General Arrangement Drawing



5.2. Ceiling Opening General Arrangement Drawing



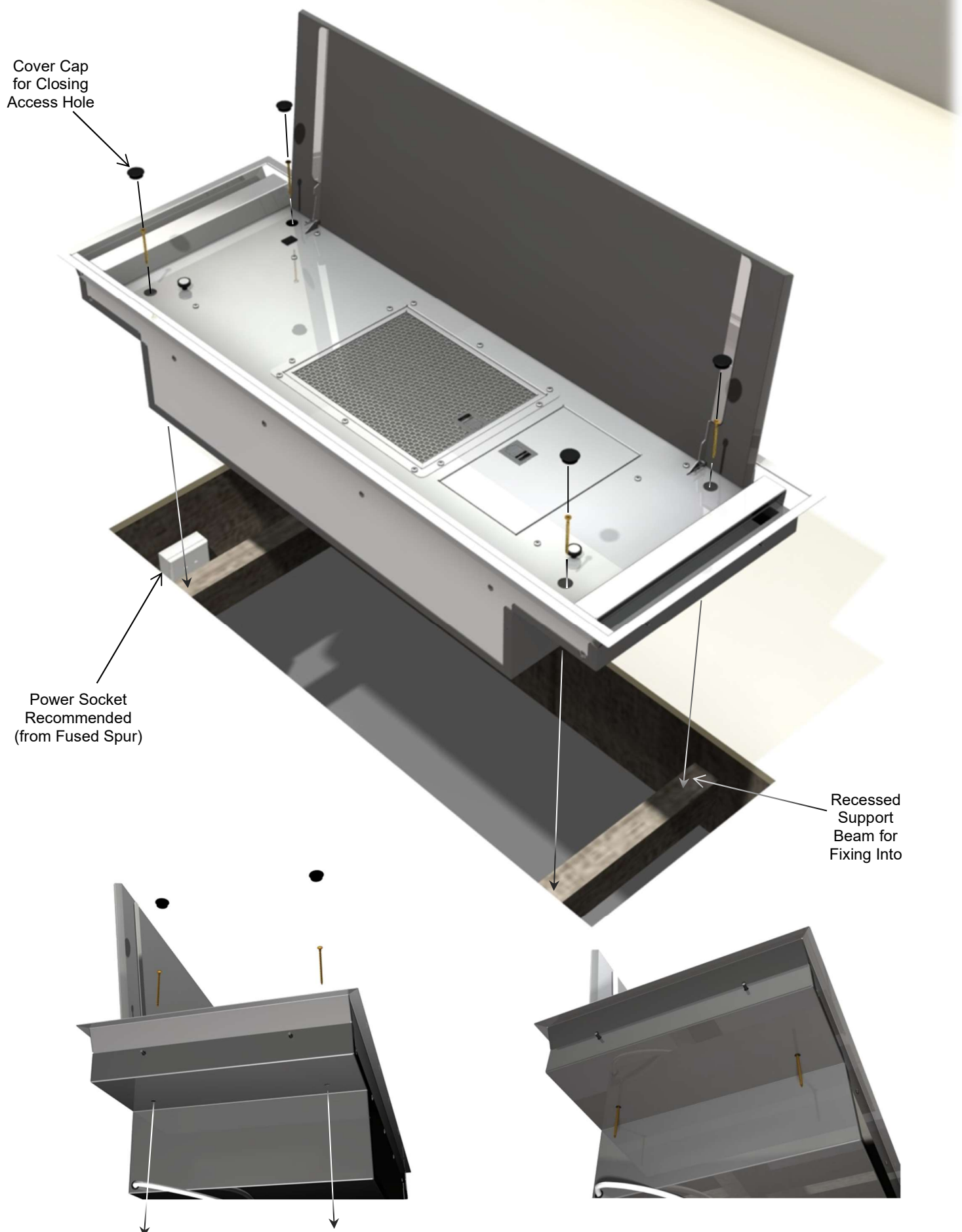
Typical Opening Layouts (Joists visualised from below)



Stratus 360 Air Recirculating Ceiling Unit Installation, Operating & Maintenance Instructions



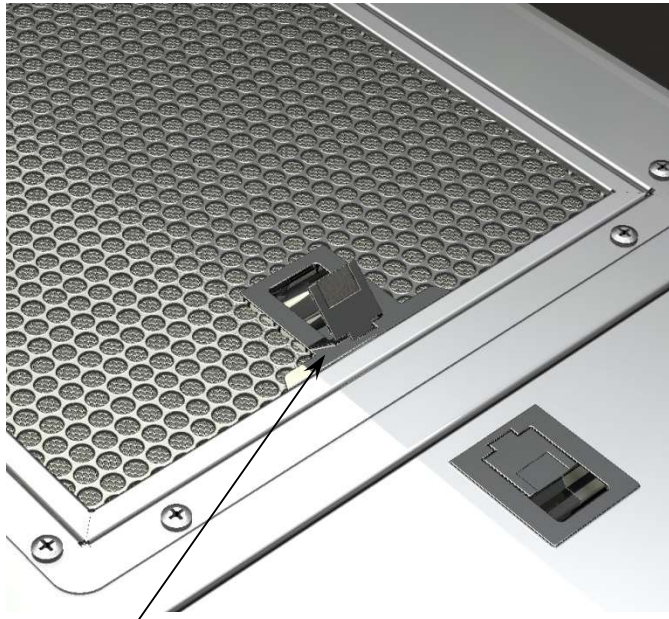
5.3. Fixing Arrangement Illustrations



Stratus 360 Air Recirculating Ceiling Unit Installation, Operating & Maintenance Instructions



5.4. Grease Filter Removal



Lift Lever
To Release
Clips



5.5. 360 Air Cleaning Module Access for Maintenance



Stratus 360 Air Recirculating Ceiling Unit

Installation, Operating & Maintenance Instructions



6. OPERATING INSTRUCTIONS

Important Information & Troubleshooting

- The unit is operated by radio remote control.
- **The Stratus 360 will only operate with the door panel in the closed position.**
The switch operated by the door panel is there for your safety and should not be tampered with.
- The extractor controller will automatically switch off the fan and 360 air cleaning module if there has been no operator action for 4 hours.
The lights will remain on until switched off manually.
- Should your remote control stop working, please install a new battery before seeking assistance.
- In the unlikely event that you experience interference problems or the remote appears to be faulty, then a new transmission code may need to be registered with the unit..

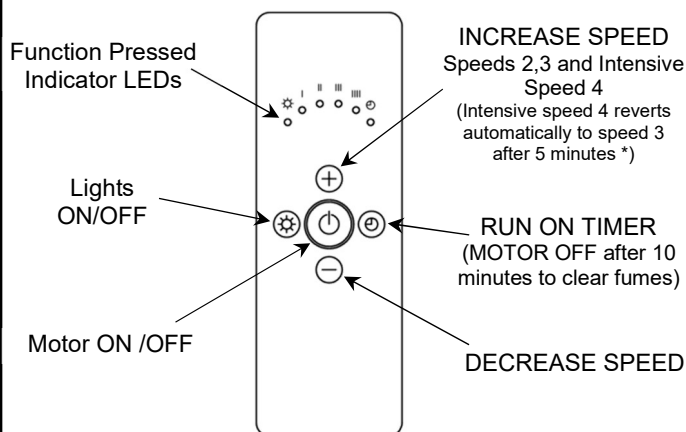
Before setting a new transmission code, try re-registering the current code with your extractor as follows: With the power to the unit switched on, open the door panel for 10 seconds to reset electronics and then close again. After 3-4 seconds repeatedly press the light switch on the controller for 1 second at a time. It can take up to 20 seconds for the extractor to tune in and register the remote control.

Refer to the instruction leaflet included with the control console regarding battery replacement and transmission code changes.

6.1. Using the Stratus 360

Switch on the power at the fused spur.

Remote Control Functions



The extractor controller will automatically switch off the appliance if there has been no operator action for 4 hours.

** If your hood control electronics was manufactured prior to the introduction of the automatic speed reduction feature, then Intensive Speed 4 will operate in the same manner as all other speeds and run continuously until you make a different speed selection.*

7. MAINTENANCE

Regular maintenance is essential to ensure good performance and long-life.

CAUTION.

To minimise the risk of fire, all instructions relating to cleaning the grease filters and removing grease deposits must be adhered to.

7.1. Opening the door panel

The door panel covers most of the extractors baseplate and conceals the grease filter, fan assembly and 360 air cleaning module access panel.

To clean hidden surfaces and to carry out routine maintenance of your 360-air cleaning module, you will need to open the door panel.

- The panel is held shut with magnetic catches.

Open the panel by grasping it close to the corners on the catch side (usually the long edge opposite the hinges) and pulling to release the panel from the magnets. Take care not to let the panel fall open freely, it should be supported and lowered carefully into the open position.

7.2. General Cleaning

- To clean the metal surfaces of the extractor, use a suitable cleaning agent, such as Stainless-Steel Cleaner and Polish (obtainable from Westin) or warm water and detergent.

Do not use any cleaning products containing bleach or abrasives. Do not use abrasive cleaning materials. To do so can permanently damage the visible finish of the metal surfaces.

- Glass surfaces should be cleaned with a suitable glass cleaning agent or warm water and detergent.

The frosted edges of the glass LED Light Blades must be completely dry to give the best lighting effect. Polish, oils, waxes or other permanently wet solutions on the glass edges will spoil the overall lighting effect and should be removed if accidentally applied. This is usually achieved by wiping along the edge of the light blade with an absorbent material (kitchen roll is good) until the glass edge is dry and uniformly cloudy in appearance.

- Clean the grease filters in a dishwasher or by hand-washing in hot water and detergent. Wash the filters at least every 2 months - sooner if the extractor is used extensively.
- To maintain the immaculate appearance of the extractor, and to minimise fire risk, ensure that grease deposits on all parts of the extractor are kept to a minimum by regular cleaning.

Pay particular attention to the extractor baseplate where air is drawn through the perimeter extraction slot (the area around the edge of the door panel) as deposits may accumulate most readily here.

Stratus 360 Air Recirculating Ceiling Unit Installation, Operating & Maintenance Instructions



7.3. Maintaining the 360 Air Cleaning Module

In order to ensure continued effectiveness, the 360 Air Cleaning Module requires only minimal routine maintenance.

The 360 Air Cleaning Module is located behind the small stainless-steel access panel on the baseplate (only visible with door open) and is removed and refitted in the same way as the grease filter.

- The 360 Air Cleaning Module requires no cleaning of the special UV-C Composite lamp or the catalytic plates surrounding it – these are self-cleaning.
- The special UV-C Composite lamp provides the power source for the photo-catalytic air cleaning reaction and also a direct and measured dose of super-oxidants and needs periodical replacement to continue to operate at optimum power output.

We recommend that the lamp is replaced annually and not less frequently than every 3 years in order to ensure continued operation at optimum power output.

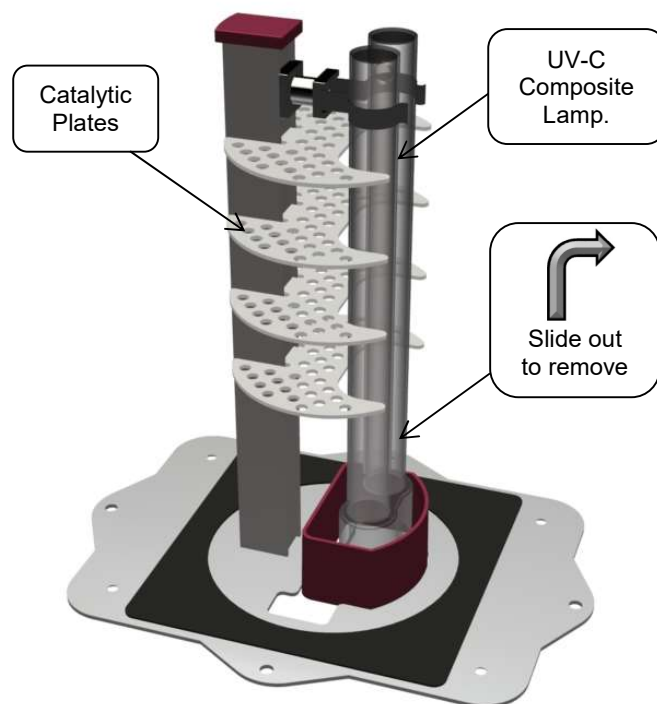
Replacement lamps are available from Westin and are supplied for installation by the end user.

Only replacement UV-C lamps supplied by Westin should be used in your Stratus 360

Note: Lamps which appear similar are available, for applications such as aquatic sterilisation, however, many do not directly generate super-oxidants. Furthermore, the super-oxidant directly generated by our lamp provides a precise and safe dose into the airstream.

To replace the UV-C lamp, open the access panel and pull the lamp away from (and out) of its base. Once the contact pins are clear of the base, the lamp can be pulled sideways and out of the clip holding it.

Clip in the replacement lamp and slide it back fully into the base so that the contact pins are located in their sockets.



Westin 360 Air Cleaning Module

7.4. Light Blade Task Lighting

The lamps are long life LED units and are not designed for end user replacement. In the unlikely event of failure please call Westin.



Accessing 360 Air Cleaning Module

- Take care to avoid touching or damaging the catalytic plates during lamp replacement.

8. SPECIFICATIONS

Electrical Specifications	
Supply Voltage	230V~ 50Hz
LED Task Lighting (Light Blades) voltage	12V
LED Task Lighting (Light Blades) power input	21.2W
Fan power input	169W
360 Air cleaning module power input	18W
Total power input	208.2W
Electrical Supply Protective Fuse Rating	3A
Westin 360 Air Cleaning Module Specifications	
Technology	Nano-TiO2 photo-catalytic oxidation + UV-C
UVC lamp	1 x 18W PLL composite tube
	Quantity O3 Plasma: 19mg/hr

W S Westin Ltd, Phoenix Mills, Leeds Road,
Huddersfield, HD1 6NG, UK
Tel: 01484 421585
Email: sales@westin.co.uk
www.westin.co.uk